

**Legend**

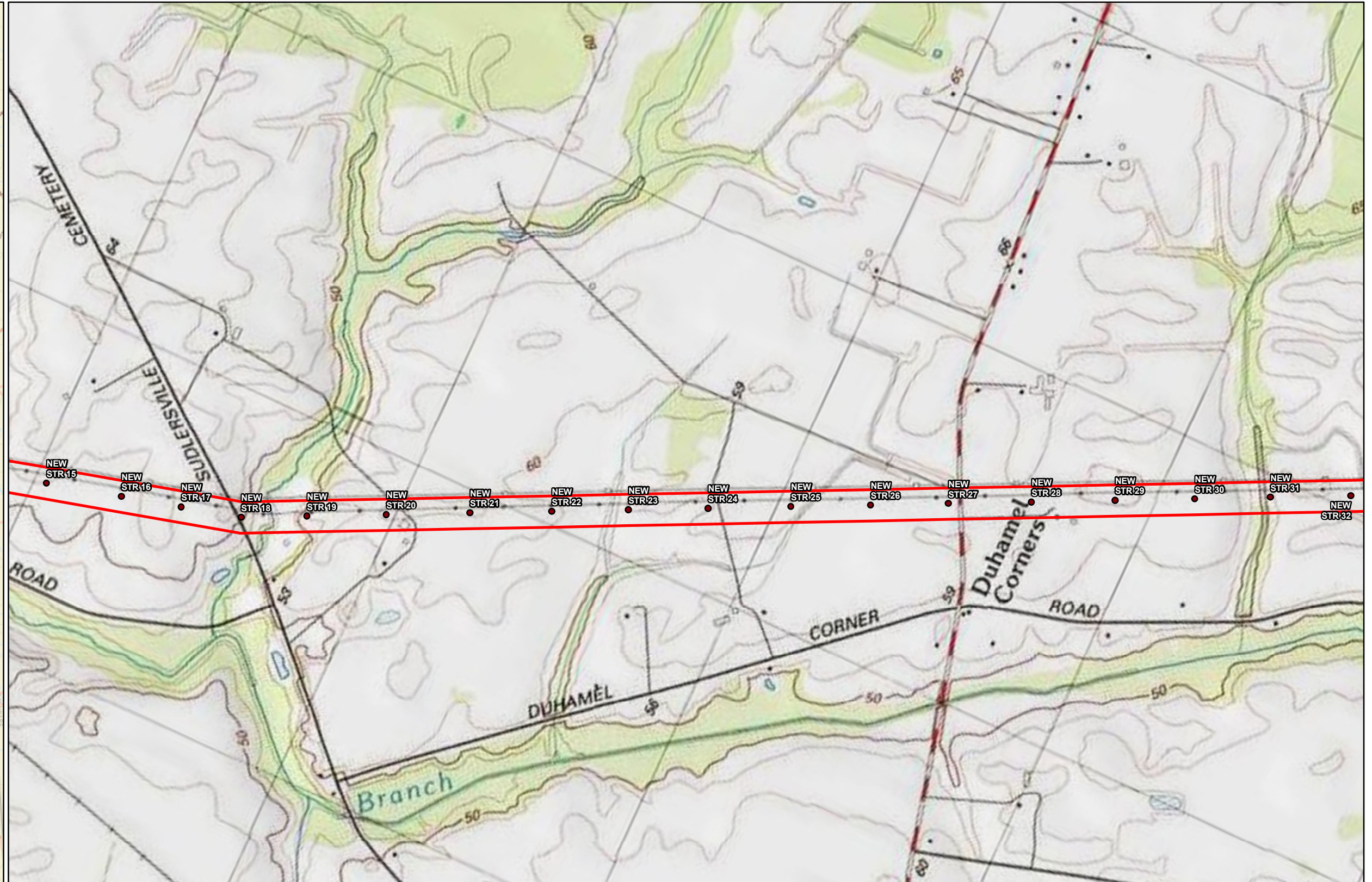
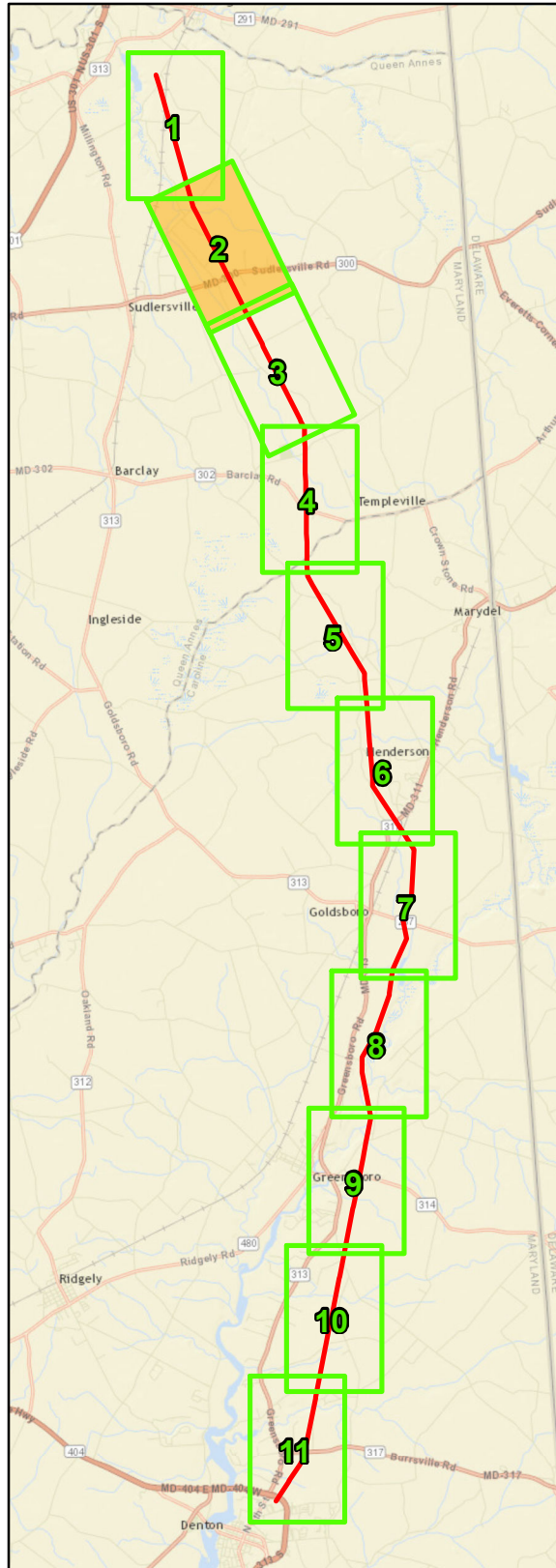
- Poles
- Delmarva Power and Light Right of Way



1 inch = 1,000 feet  
 0 500 1,000  
 Feet



Church to Steele 138kV Rebuild Project  
**Figure D-1**  
**Topographic Mapping**



**Legend**

- Poles
- Delmarva Power and Light Right of Way

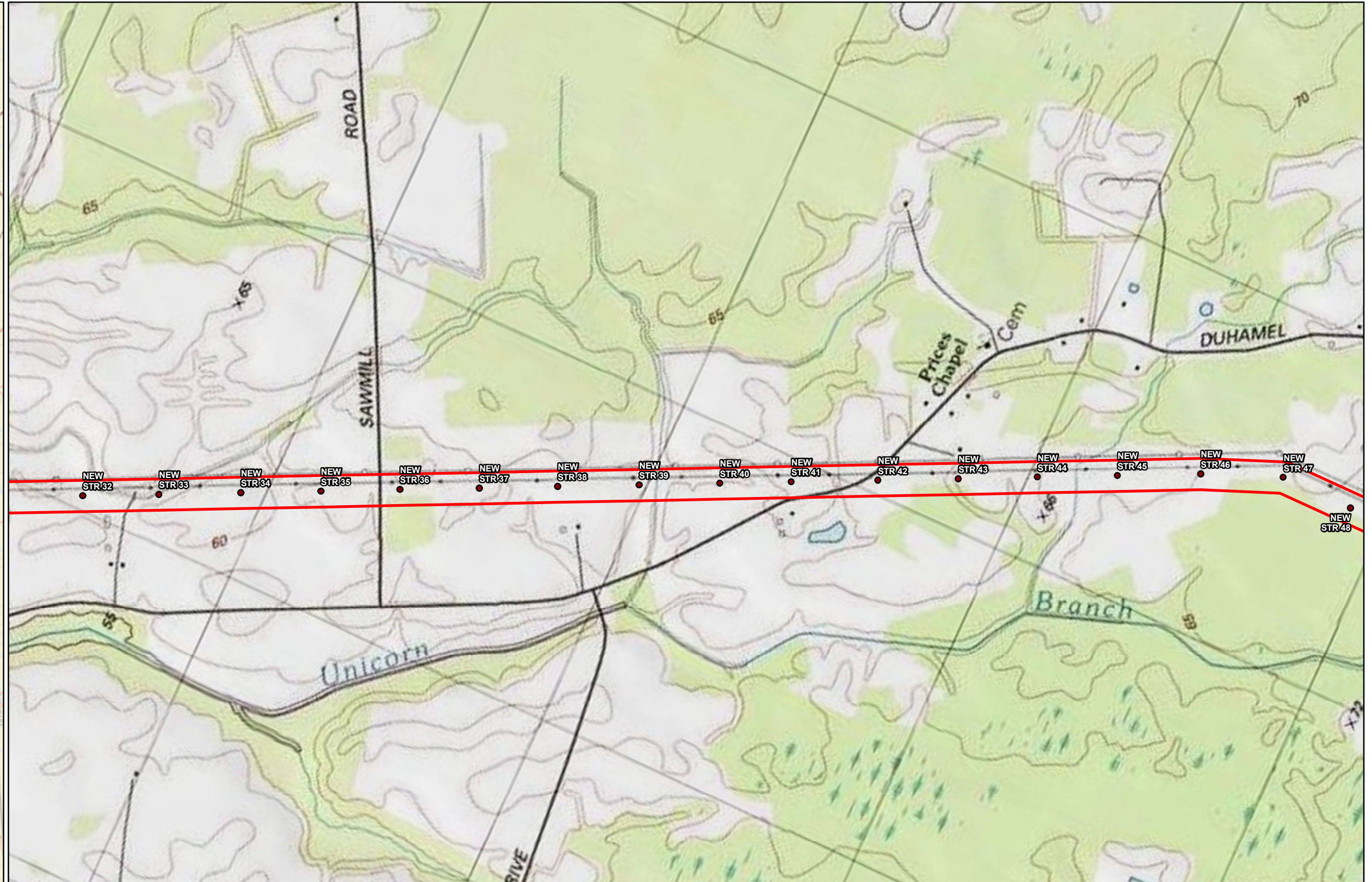
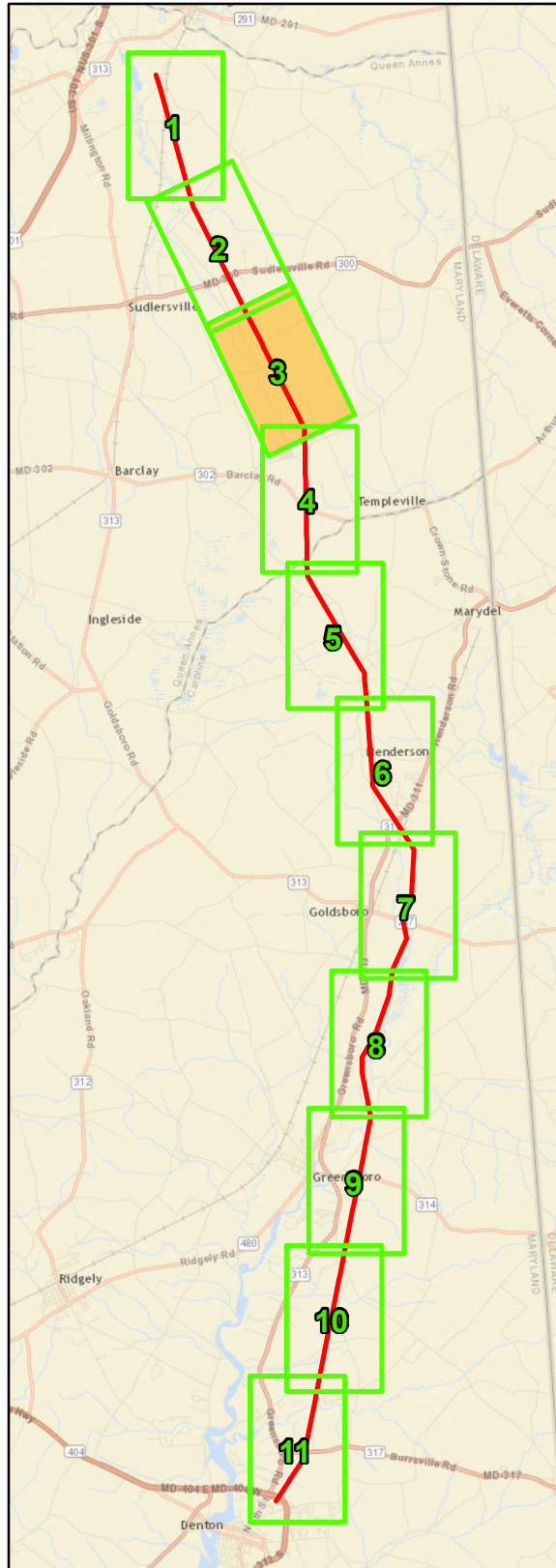


1 inch = 1,000 feet  
 0 500 1,000  
 Feet



Church to Steele 138kV Rebuild Project

**Figure D-1**  
**Topographic Mapping**



**Legend**

- Poles
- Delmarva Power and Light Right of Way



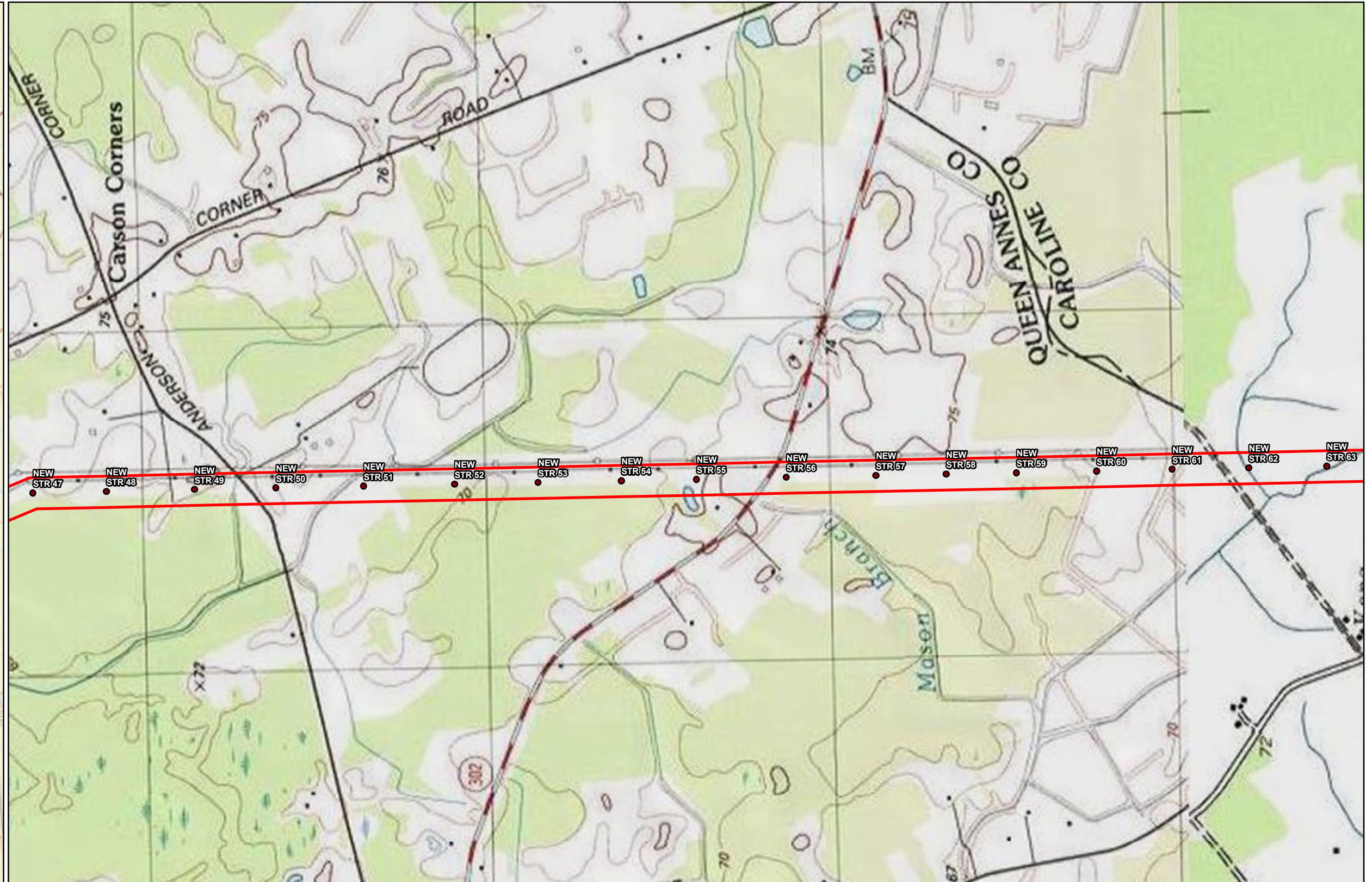
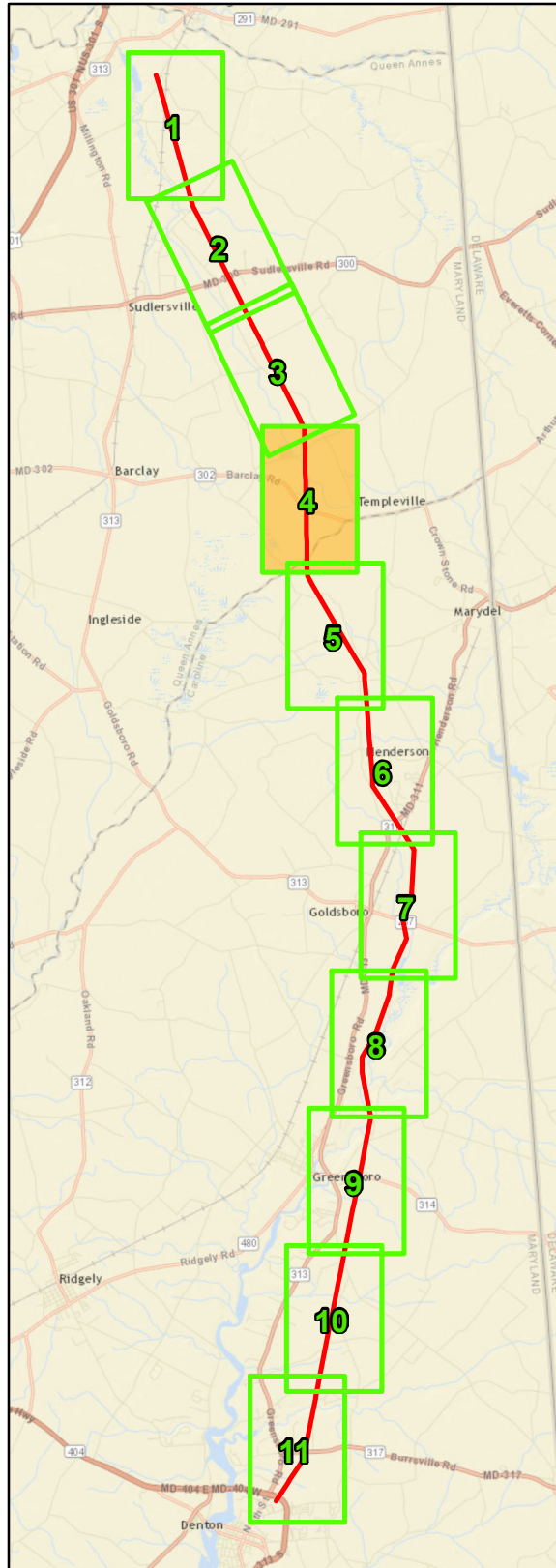
1 inch = 1,000 feet  
 0 500 1,000  
 Feet



Church to Steele 138kV Rebuild Project

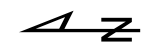
**Figure D-1  
 Topographic Mapping**

Page 3 of 11



**Legend**

- Poles
- Delmarva Power and Light Right of Way



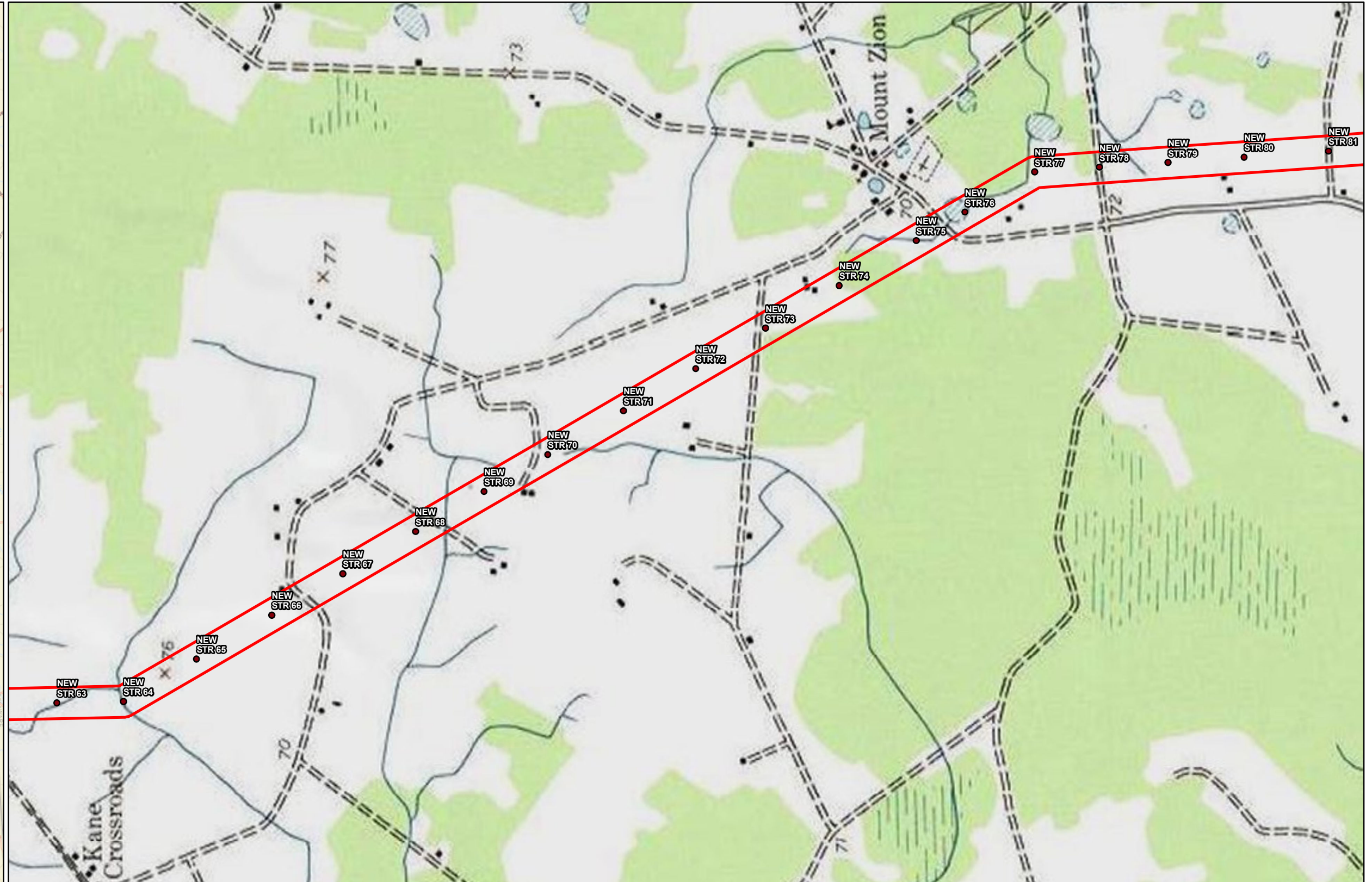
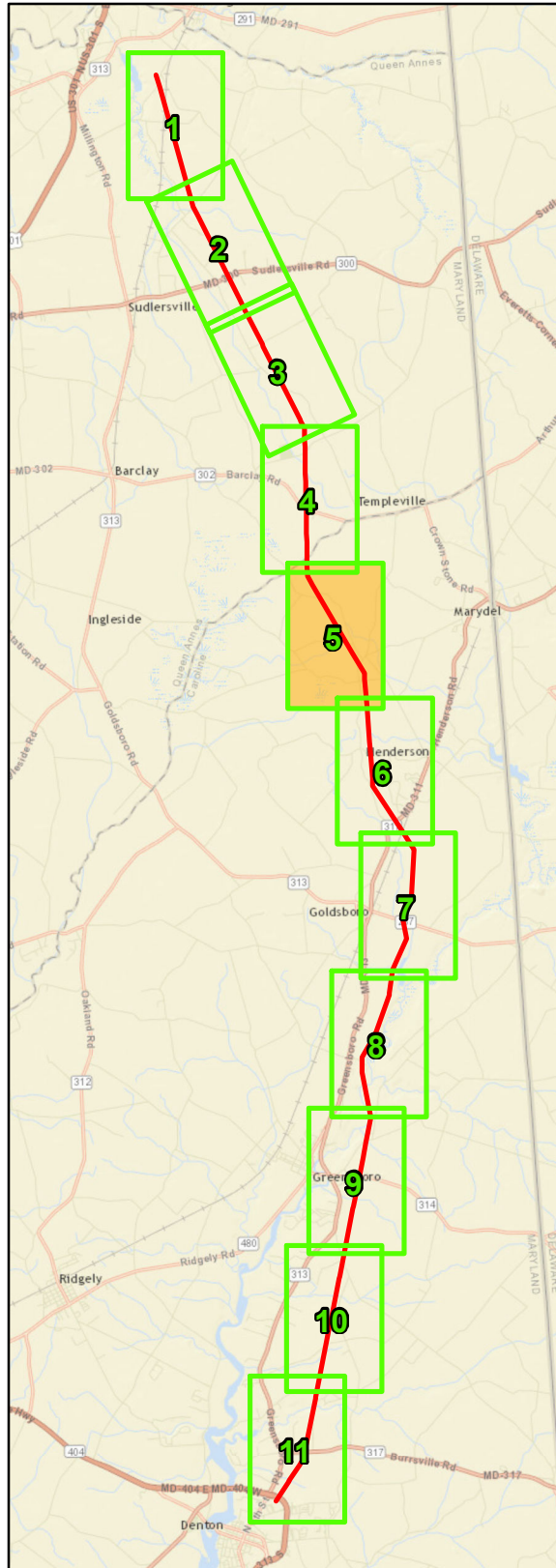
1 inch = 1,000 feet  
 0 500 1,000  
 Feet



A PH Company


Church to Steele 138kV Rebuild Project

**Figure D-1  
 Topographic Mapping**



**Legend**

- Poles
- Delmarva Power and Light Right of Way



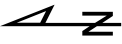
**delmarva  
power**  
A PH Company

Church to Steele 138kV Rebuild Project

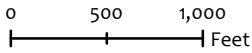
**Figure D-1**

**Topographic Mapping**

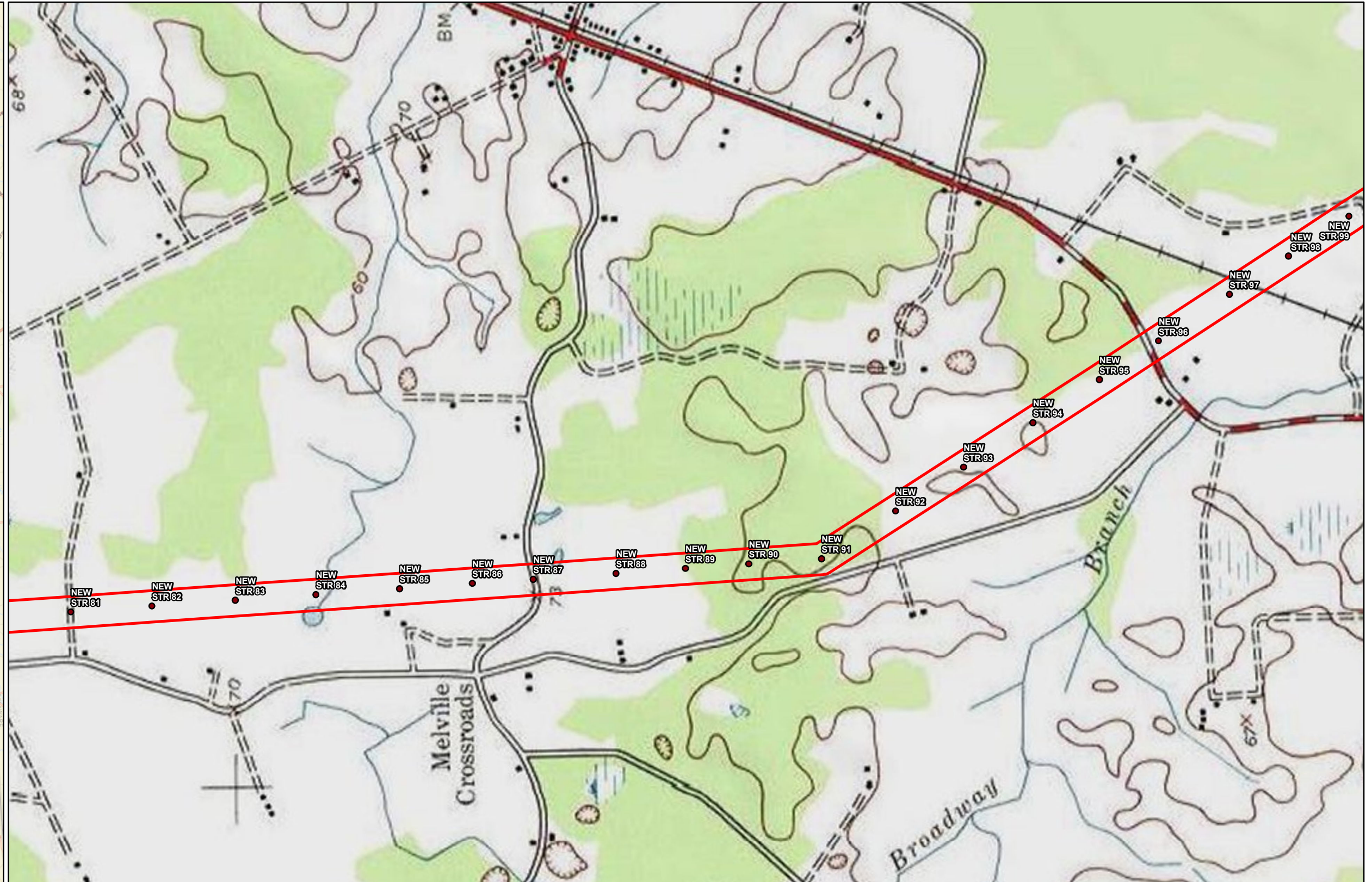
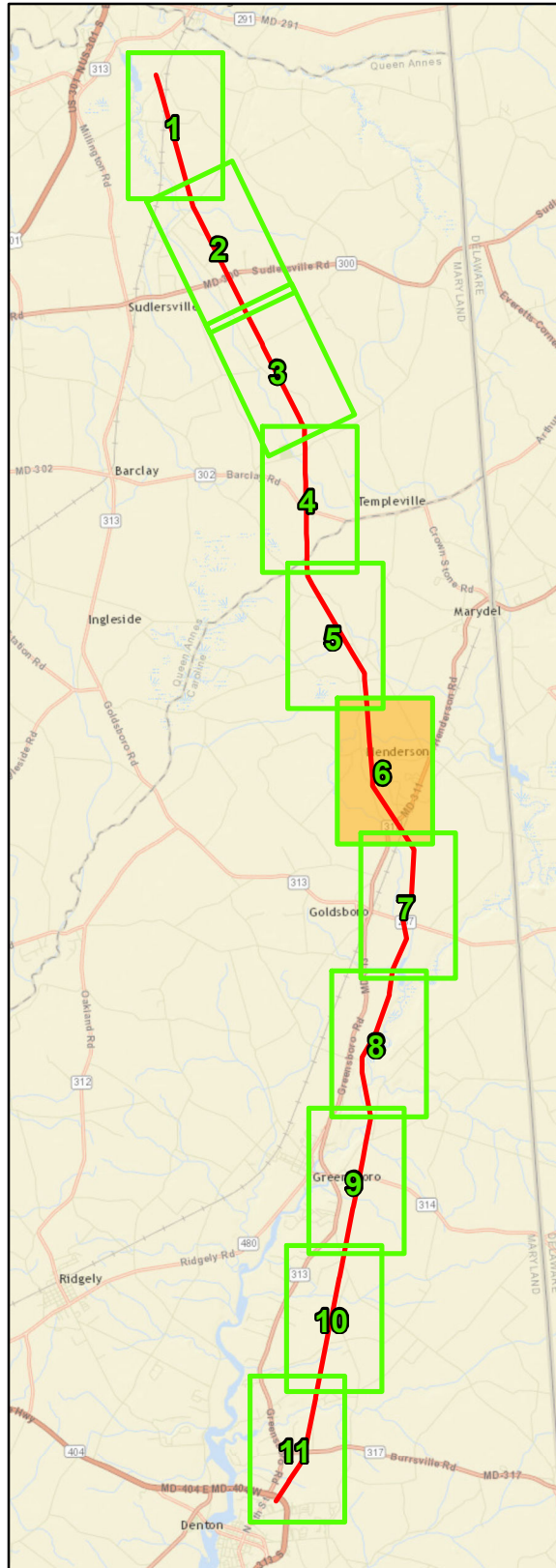
Page 5 of 11



1 inch = 1,000 feet



0 500 1,000  
Feet

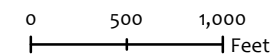


**Legend**

- Poles
- Delmarva Power and Light Right of Way

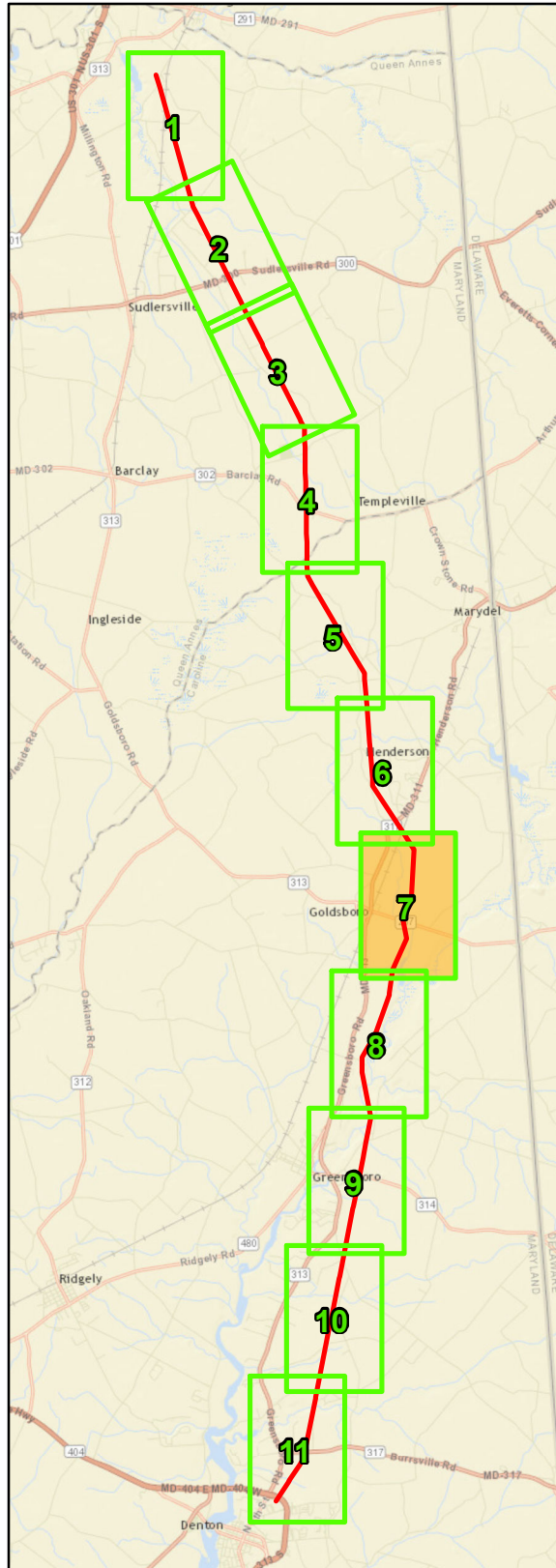


1 inch = 1,000 feet




Church to Steele 138kV Rebuild Project

**Figure D-1  
Topographic Mapping**



**Legend**

- Poles
- Delmarva Power and Light Right of Way



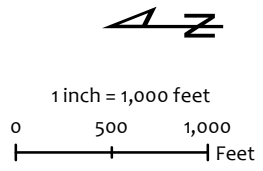
Delmarva  
power  
A PH Company

Church to Steele 138kV Rebuild Project

**Figure D-1**

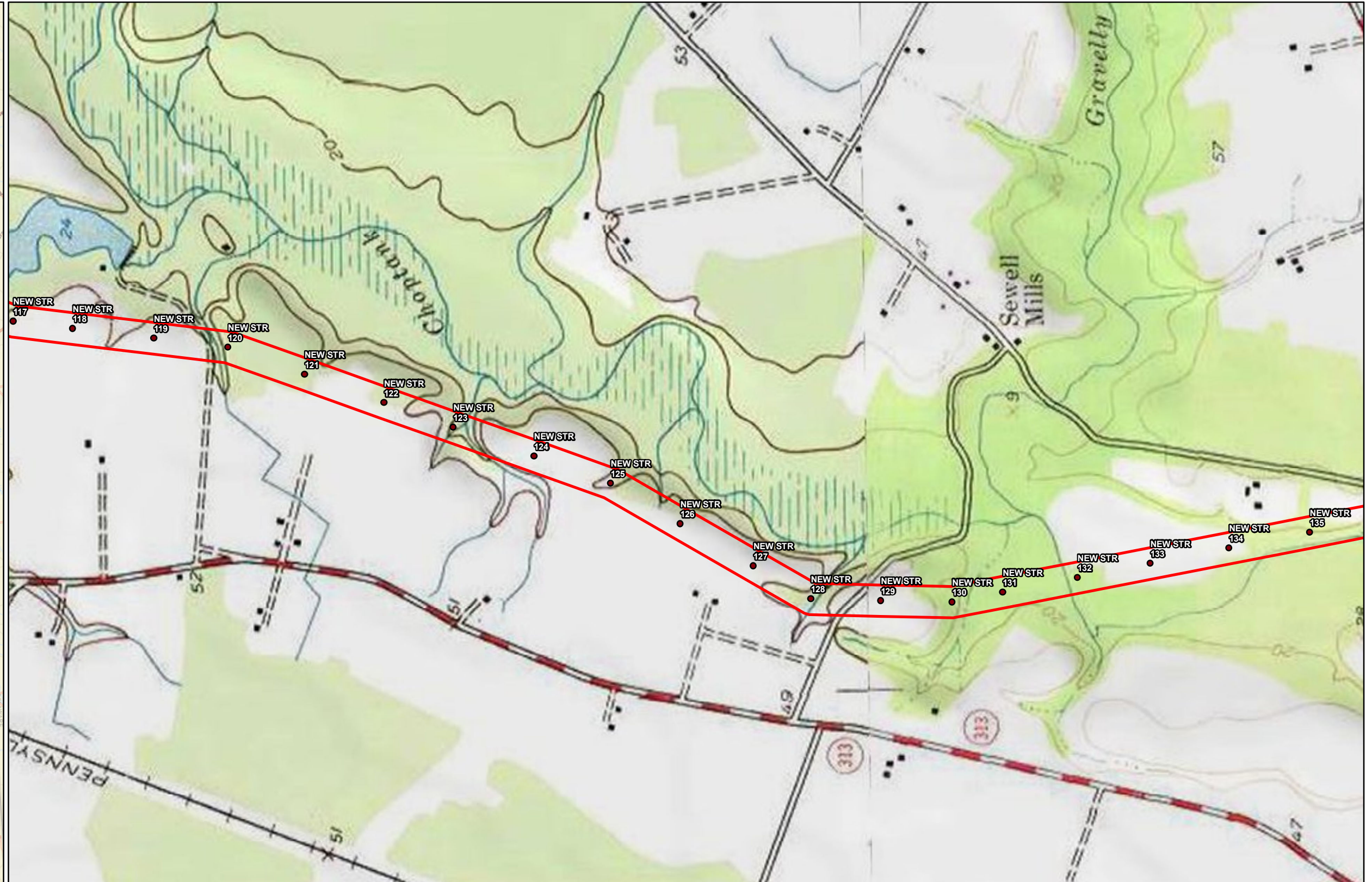
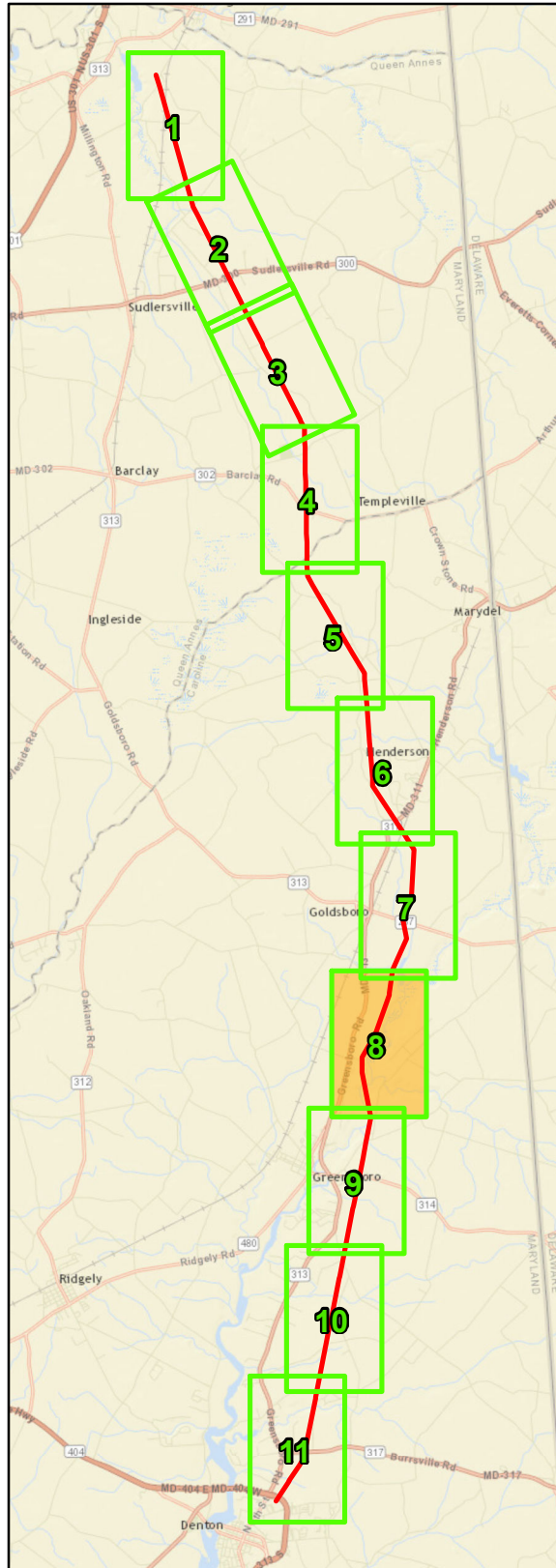
**Topographic Mapping**

Page 7 of 11



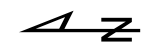
1 inch = 1,000 feet

0 500 1,000 Feet



**Legend**

- Poles
- Delmarva Power and Light Right of Way

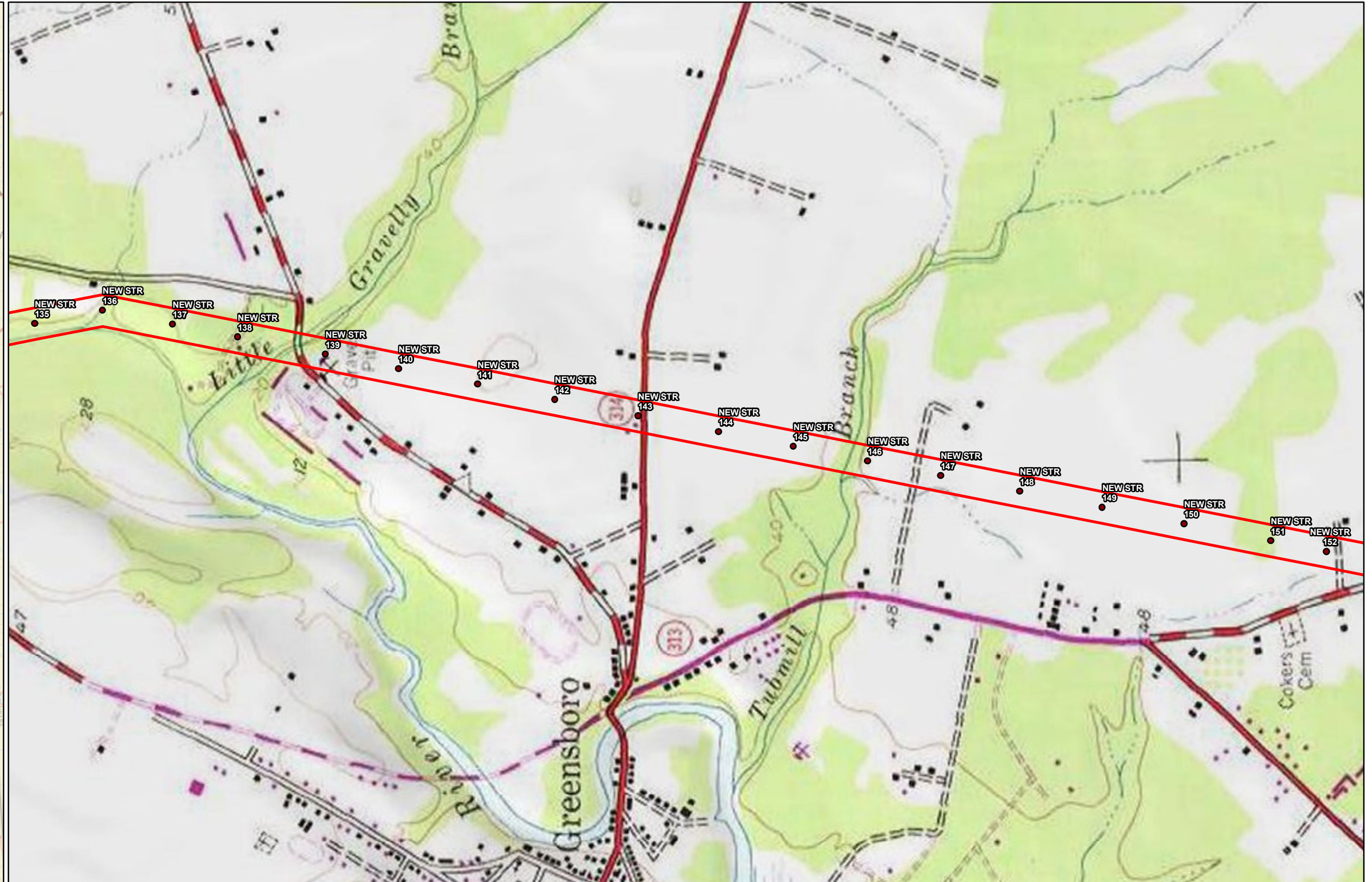
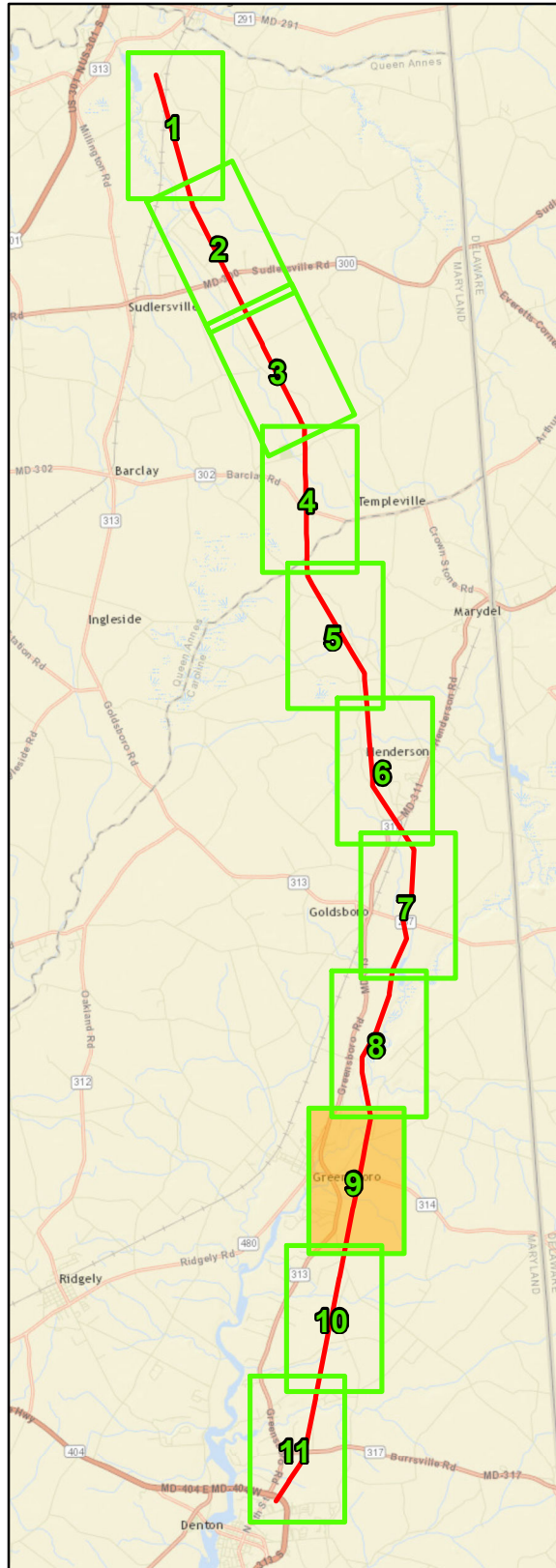


1 inch = 1,000 feet  
 0 500 1,000  
 Feet



Church to Steele 138kV Rebuild Project  
**Figure D-1**  
**Topographic Mapping**





**Legend**

- Poles
- Delmarva Power and Light Right of Way

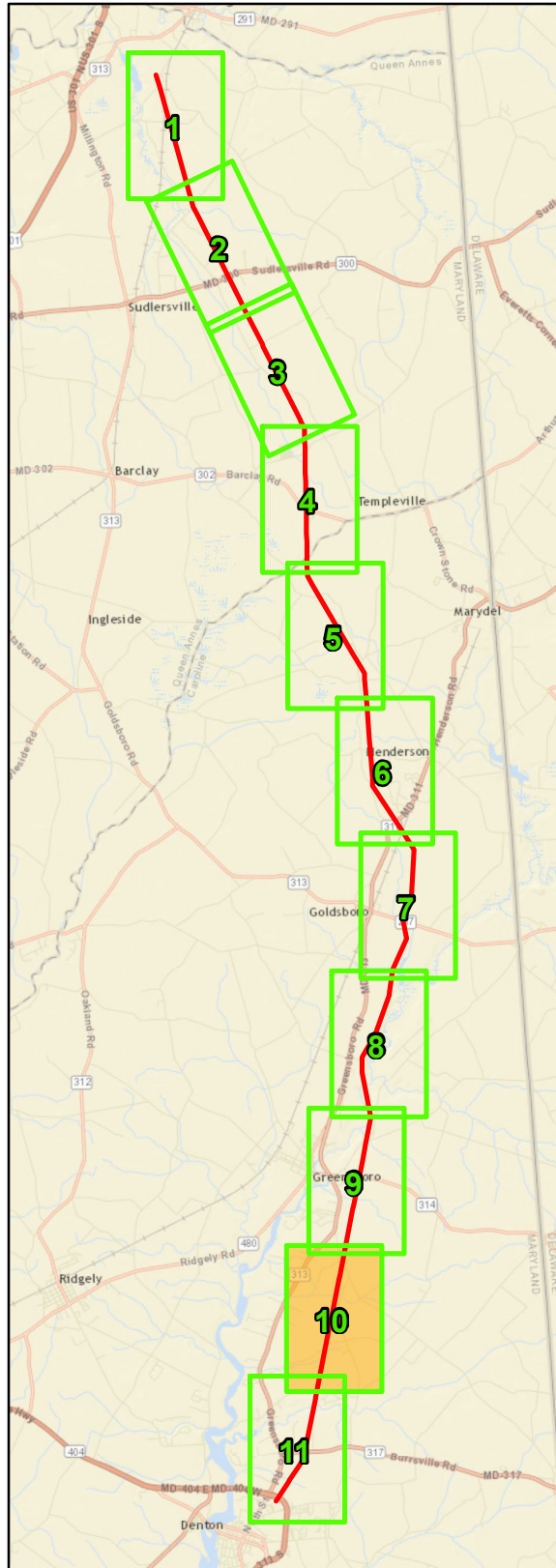


1 inch = 1,000 feet  
 0 500 1,000  
 Feet



Church to Steele 138kV Rebuild Project

**Figure D-1**  
**Topographic Mapping**



**Legend**

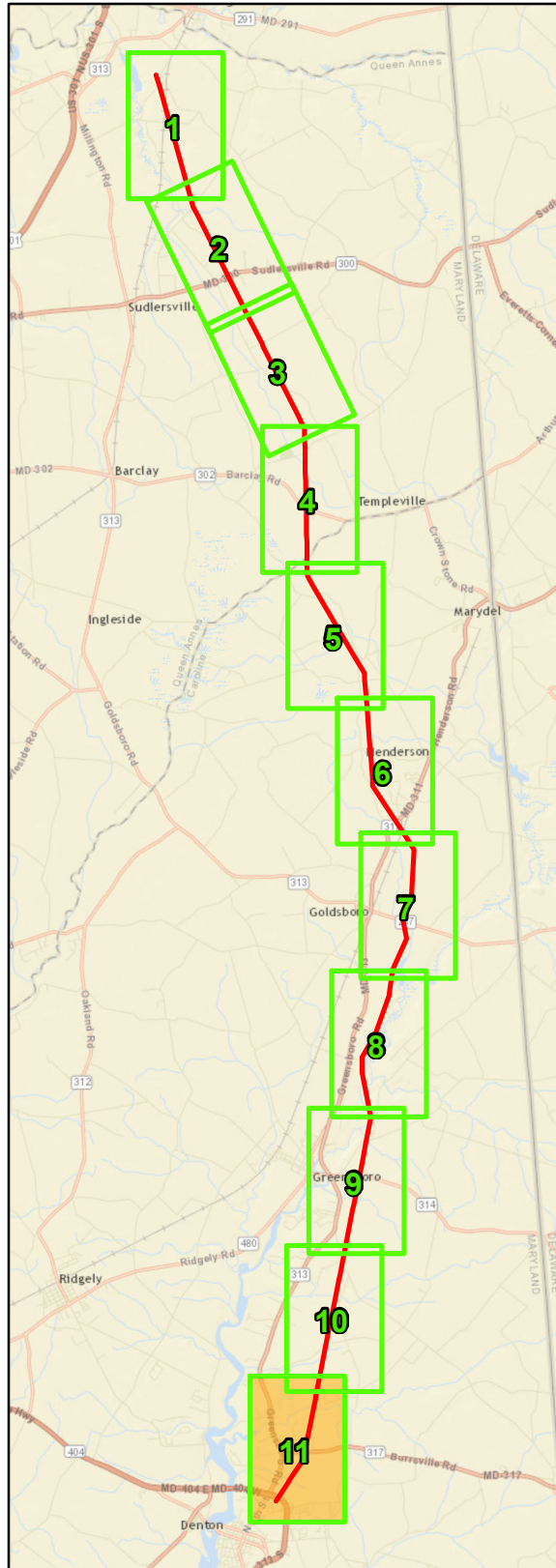
- Poles
- Delmarva Power and Light Right of Way



1 inch = 1,000 feet  
 0 500 1,000  
 Feet

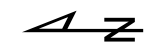


Church to Steele 138kV Rebuild Project  
**Figure D-1**  
**Topographic Mapping**



**Legend**

- Poles
- Delmarva Power and Light Right of Way



1 inch = 1,000 feet  
 0 500 1,000  
 Feet



Church to Steele 138kV Rebuild Project

**Figure D-1  
 Topographic Mapping**

Page 11 of 11